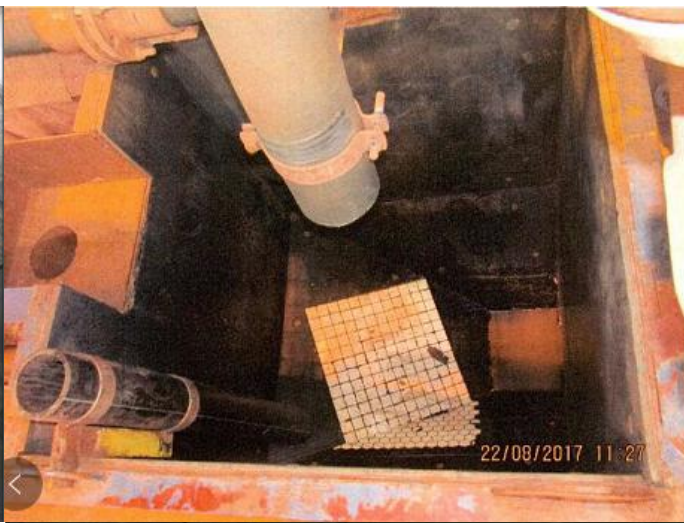


Rubber ceramic products





LONG SERVICE LIFE AND LOWER COSTS



Long service-life. Lower total costs The combination of the best properties of rubber and ceramics ensures an extra long life cycle in comparison with other wear protections. The extraordinarily hard ceramic elements provide unique resistance to sliding wear, while the elastic properties of the rubber effectively absorb shock impacts.

PERFECT ANTI WEAR RESISTANT



QS rubber ceramic lining's cover every angle.It is effective protect equipments

UNIQUE CERAMIC DESIGN SHAPE

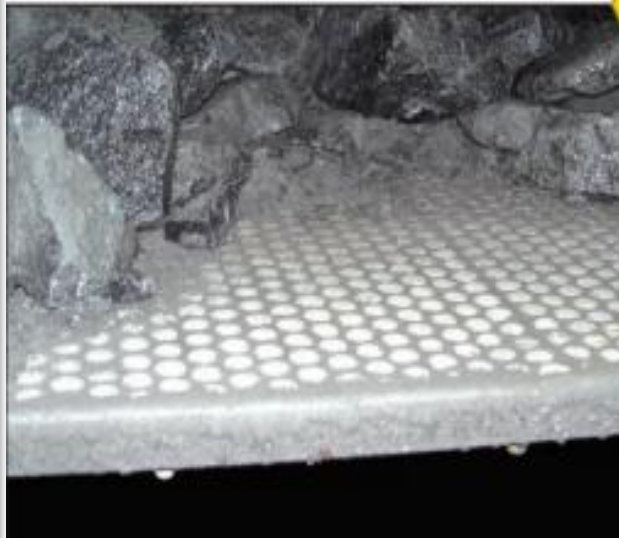


Different applications different shape.All kinds of shapes manufactured according to the work environment.

INSTALLATION-MORE FRIENDLY

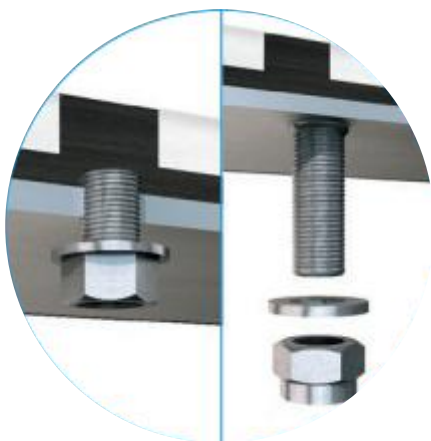


Reduces downtime Standard sizes and adapted solutions, together with reliable and flexible attachment systems, ensure simple, quick and safe installation.





Alumina content:
92% alumina/95% alumina
Rubber tape:
Natural rubber
Sizes:
500*500,300*300,200*500.....

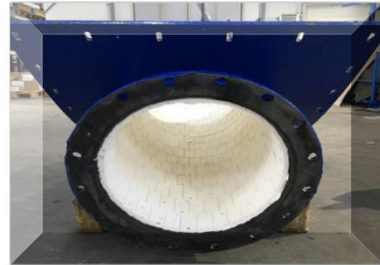


In addition to the base programme, there are already a number of designed solutions tailored to suit specific applications.

We are continually prepared with your cooperation to find new and smart ideas to make your production more profitable. Thanks to the many advantages of QS rubber ceramic lining, the solution to your wear problems is never far away!

Physical and Chemical Index:

| | |
|---|-----------------------|
| Al ₂ O ₃ content: | >92~95% |
| Fe ₂ O ₃ content: | <0.15% |
| Mohs' hardness: | >8 |
| Water absorption (%): | <0.02% |
| Bulk density: | 3.65g/cm ³ |
| Max working temp: | 800°C |
| Min working temp: | -50°C |
| Abrasion (%): | <0.02% |



Stock Size (Inner Diameter: MM)

Thickness: 5-30MM

| | | | | |
|-----|------|------|------|------|
| φ40 | φ81 | φ125 | φ194 | φ307 |
| φ50 | φ86 | φ144 | φ200 | φ330 |
| φ57 | φ90 | φ150 | φ205 | φ356 |
| φ58 | φ96 | φ157 | φ220 | φ417 |
| φ60 | φ97 | φ163 | φ230 | φ438 |
| φ65 | φ101 | φ172 | φ240 | φ450 |
| φ73 | φ110 | φ185 | φ252 | φ498 |
| φ76 | φ120 | φ187 | φ295 | φ710 |

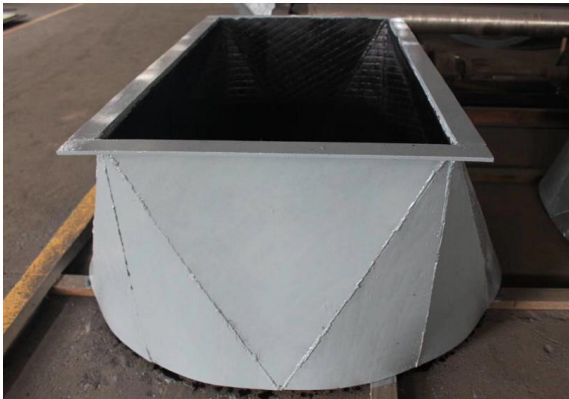


materials
alumina ceramic tiles



materials
isostatic ceramic

Chromium carbide products



| Cr | C | Mn | Si | Other | Hardness |
|---------|-------|-----------|-----------|--------------|----------|
| 15%-30% | 4%-5% | 0.5%-2.5% | 0.5%-1.5% | Less than 2% | 58-62HRC |

HARDFACING LAYER:

| | | | |
|-----------------------|---------------------|----------------------|---|
| Welding wire diameter | Cladding | Arc welding process | High abrasion resistance in temperature |
| Φ2.8mm | Hardfacing | Open-Arc | ≤800°C |
| Macro hardness | Hardness tolerances | Thickness tolerances | Welding direction |
| 58-62HRC | -0/+1,5 HRC | -0/+1 mm | Lengthways of the plate |



